



Spectra's BlackPearl and Komprise: Streamlined Solution for Cost-Effective Storage

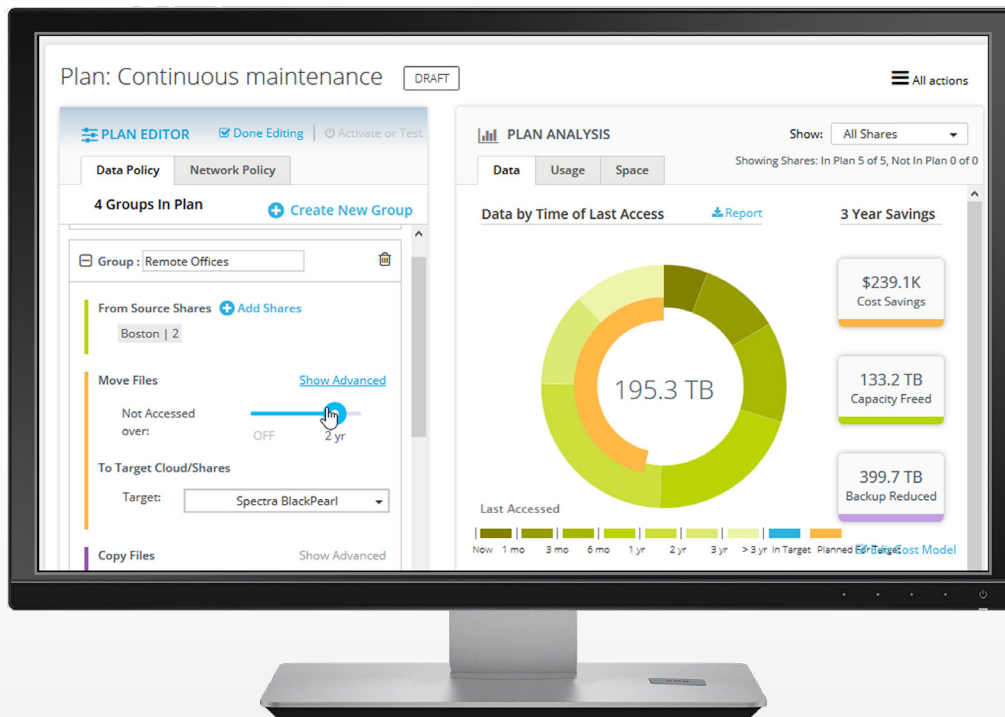
Manage and store data intelligently

Data is growing quickly, but budgets are tight. From 50% to 80% of data is infrequently accessed, yet many organizations store this data on the same expensive resources as active data due to a fear of disrupting users and applications.

Komprise and Spectra® have teamed up to deliver a solution that uses an ROI-driven intelligent data management platform that saves money without interrupting the workflow.

Komprise's advanced data management software quickly identifies data to be moved or archived with a CIFS, NFS or Lustre interface. Use the joint Komprise and Spectra solution to gain full visibility into who is creating data and where it is being stored. Then, set policies for sending less-active data to the Spectra BlackPearl® Converged Storage System. Komprise transparently archives terabytes, petabytes or exabytes of that data to all of Spectra's data storage solutions without any disruption to users or applications, and without changing the active data path. Users maintain access to all data via primary storage.

Automatic scale-out handles massive data expansion



Joint Solution Features:

- Operates transparently
- Predicts ROI
- Lowers storage costs
- Reduces disruption
- Deploys and manages effortlessly
- Provides support
- Allows easy web-based access

BlackPearl and Komprise Benefits

“Organizations can typically save 70% or more on storage costs using Komprise and Spectra's BlackPearl together.”
Krishna Subramanian, COO, at Komprise

Manage with insight

Understand your data growth, usage, and the ROI of moving data. Set rules to move data to Spectra BlackPearl Converged Storage System and then onto tape.

Increase performance and capacity

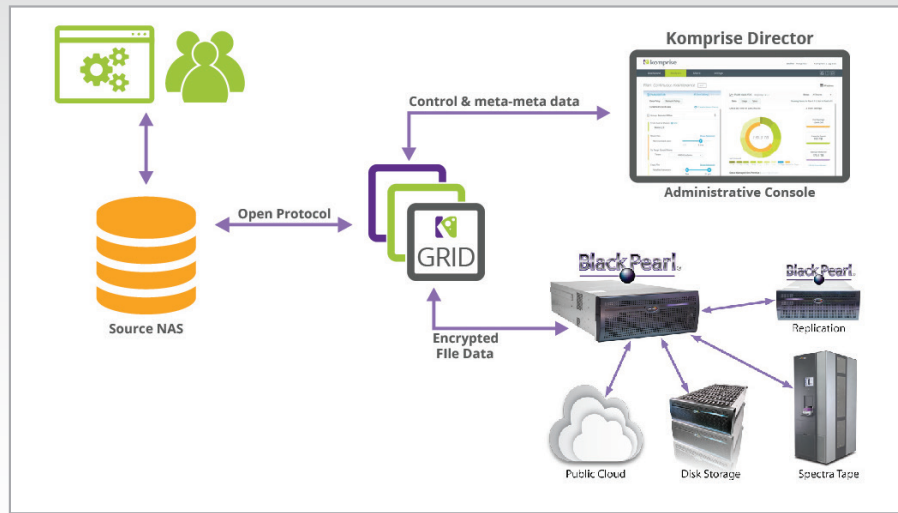
Extremely simple to operate and use, automates and adapts to your environment; Komprise VM's can run in parallel to transfer massive amounts of data.

No disruption for users

Users and applications continue to access the moved data as they did before, allowing for affordable archive.

Getting Started with Spectra and Komprise

Komprise analyzes, moves and manages data across your storage to give instant savings of 70% or more, without any disruption. Plan storage capacity, identify and transparently archive cold data to Spectra storage targets, create a low-cost disaster recovery copy, migrate data and shrink backups with the Spectra and Komprise solution.



Installation Overview

Initiating Komprise and Spectra BlackPearl together is as straightforward as using it.

- 1. Configure Komprise** to connect to source storage.
- 2. Configure BlackPearl** as a Komprise storage target:
 - Provide basic BlackPearl information.
 - Provide basic connection information for BlackPearl.
 - Specify metadata target to store Komprise metadata. This can be any NFS, CIFS or S3 storage. This allows faster directory listing and avoids tape latency by keeping small metadata files off BlackPearl.
- 3. Create a data movement "Plan"** from the Komprise Director web interface.
 - "Create New Group."
 - Select data source with "Add Shares" then BlackPearl as the target.
 - Choose the age of the files to be moved.
 - Exclude small files with insignificant space savings through "Show Advanced" under Move Files.
- 4. Activate the Plan** to start moving your data.
- 5. Boost ROI and rest easy.**

