



Complete production workflow with single namespace using Tiger Bridge and BlackPearl

Spectra BlackPearl Archive for Tiger Bridge Workflows

Tiger's Software-Defined Data Management solutions are designed for Scale, Performance and Flexibility. They are ideal for high-speed SAN/LAN collaborative workflows requiring Avid bin locking and/or advanced project management. Tiger Bridge HSM Tiering and Synchronization middleware and BlackPearl® Converged Storage System enable significant cost savings as the combined solution integrates online, nearline and archive storage in a single namespace. Content is always at the right place, at the right time.

Benefits

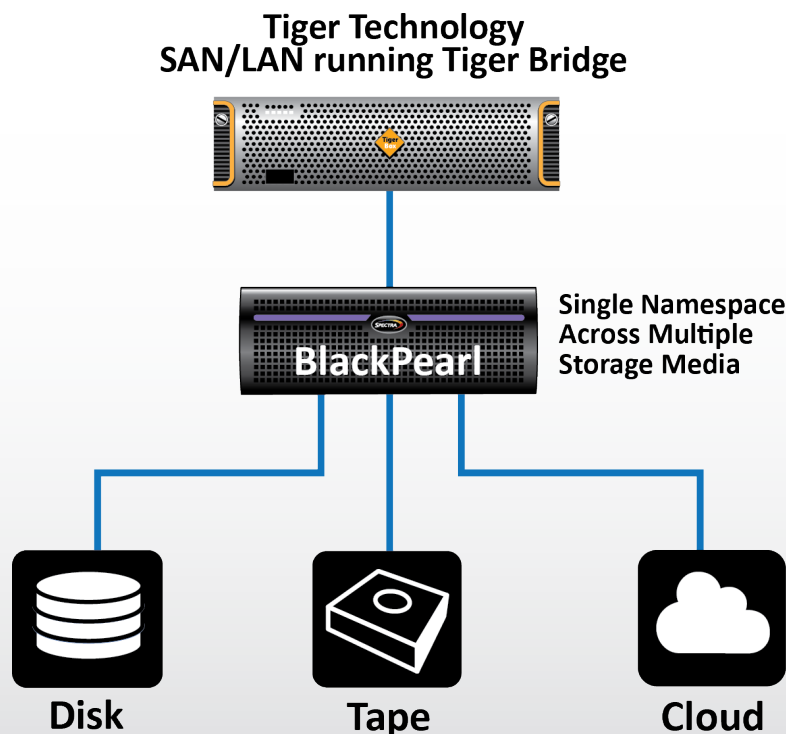
- Single Namespace for online, nearline and archive
- High-Speed File Sharing for mixed SAN/LAN workgroups
- Workflow Management with users/groups/projects control
- Remote collaboration between satellite offices
- Seamless access to all content at any time
- No changes to applications or workflows
- Streamlined management with little or no intervention

How does it work?

Tiger Bridge works in the background and relies on simple policies to replicate or migrate content. Tiered files are replaced with zero-byte stub files on the production volume. These placeholders allow applications to function transparently as if the data exists in its original location. Users and applications no longer need to worry where data is actually stored. Data movement between the production volume and BlackPearl is both transparent and automatic, requiring little or no intervention from either users or administrators.

How does BlackPearl fit into the Tiger Bridge workflow?

Tiger Bridge is the middleware that extends the production volume to the Spectra BlackPearl. Users can replicate and tier aging files to affordable, scalable Spectra ArcticBlue® object storage-based disk, or Spectra Tape Libraries via BlackPearl.



System Features

- Enables short and long form archive all in one system
- Non-disruptive data migration
- Ingest of foreign LTFS assets
- Automatic tape repack (space reclamation)
- Supports LTO and Enterprise Tape Technologies
- Manage externalized tapes via BlackPearl GUI
- Data management policies (Advanced Bucket Management)
 - Data retention policies
 - Multiple copies for nearline & archive disk
 - Supports 12TB HDDs for nearline and archive storage
 - Remote copy

BlackPearl System Specifications

- Performance
 - Up to 3GB/sec
- Database
 - 50 million to 1 billion objects
- Drives and media – LTO, IBM™ TS11XX
- Phone home support
- Seamless scaling
 - ArcticBlue: Up to 10.3PB
 - Spectra tape library support: 40-50,000 slots

About the Solution

Using Tiger Bridge and Spectra BlackPearl, content creators can use minimum valuable production storage, and automatically backup and restore all production assets with a simple, artist-friendly UI. High speed connections and transparent stub-file workflow let users and applications easily restore their content on demand, without interrupting the creative process.

System Requirements



Basic Setup

Tiger Bridge must be installed on a supported Windows OS. A BlackPearl must be configured and available for network communications within the Tiger Bridge system. The BlackPearl hostname, access key, and security key must be set up for the S3 protocol. BlackPearl 5.0 or later is required.

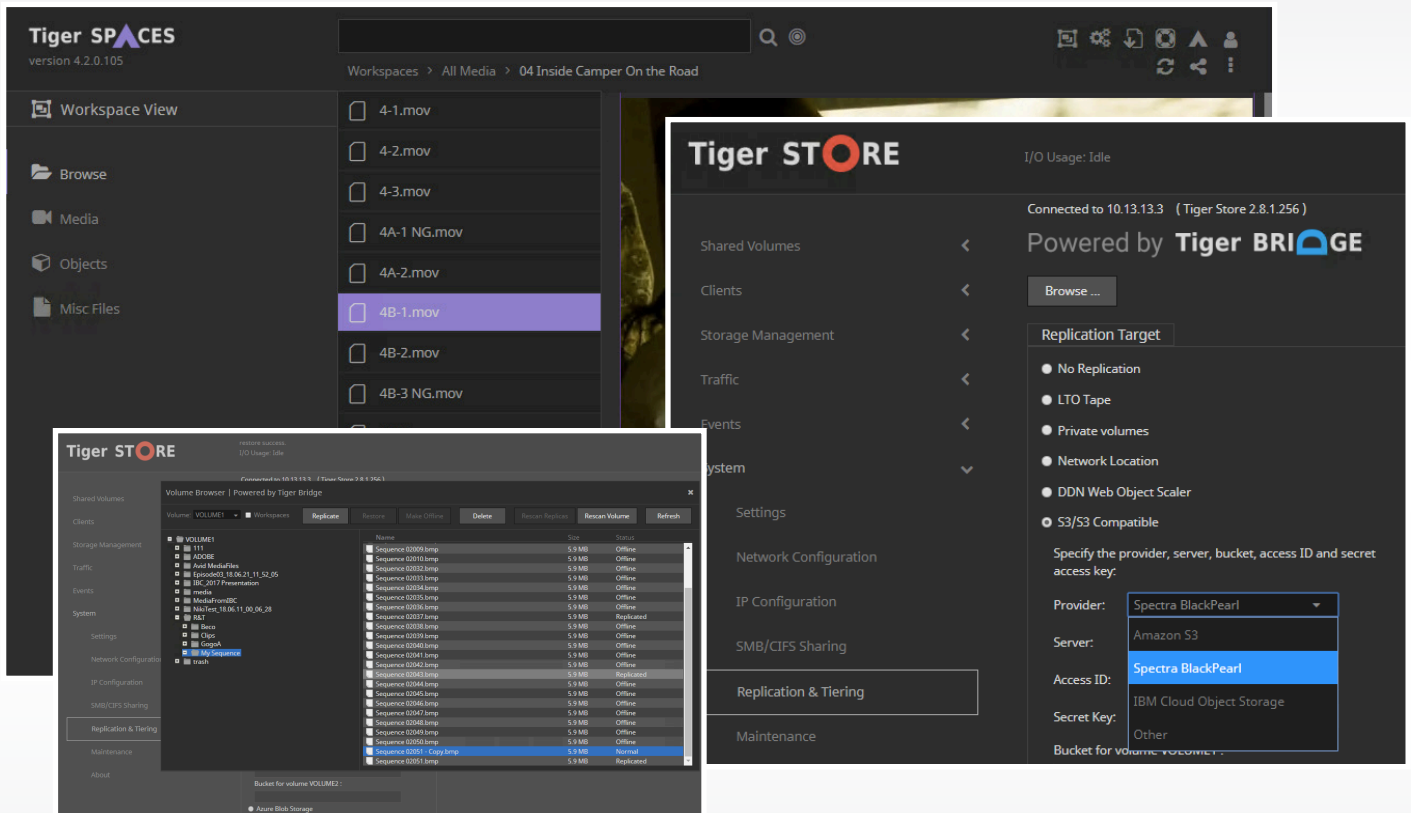


Requirements

Tiger Bridge 3.5 (or latest) must be licensed for Cloud/S3 targets. Windows OS with .NET Framework 4.5. Spectra Logic permanent storage target - Online Disk, ArcticBlue and/or Tape Library.

Required Tiger Bridge information:

- BlackPearl host name or IP address
- BlackPearl port
- Access ID
- Secret key
- Bucket name



User Interaction

When content can be retrieved quickly from BlackPearl, access to stub-files trigger immediate retrieval of content. When the archived material is stored on tape or in the cloud, it may be desirable to limit and control data movements.

When browsing the file system directly on the Tiger Bridge server, an icon is overlaid on every file to indicate its status (normal, replicated, offline). Users can trigger data movements using a right-click file extension menu. When using Tiger Bridge in combination with Tiger Store, SAN/LAN clients can access the Tiger Store data mover Browser interface to trigger data movements. Finally, when used in conjunction with Tiger Store+Tiger Spaces, SAN/LAN clients have the ability to easily trigger movement of entire projects from within the Tiger Spaces interface.

Spectra Logic

6285 Lookout Road · Boulder, CO · 80301 · USA
 303-449-6400 · 800-833-1132
 www.spectrallogic.com · sales@spectrallogic.com

Tiger Technology

11877 Douglas Rd. Suite 102-326 · Alpharetta, GA 30005 · USA
 514-700-1230 · 888-707-1230
 www.tiger-technology.com · sales@tiger-technology.com