



PixStor Ngenea and BlackPearl Storage Solution

Ngenea and BlackPearl® for Media and Entertainment

Ngenea provides a single, simplified ingest point that manages the flow of content to each tier of storage in the Spectra BlackPearl® Converged Storage System. The fully integrated solution provides a transparent means for users to easily migrate, search for, and restore their assets, regardless of the storage tier it resides on, as well as make smart decisions based on storage requirements and budget.

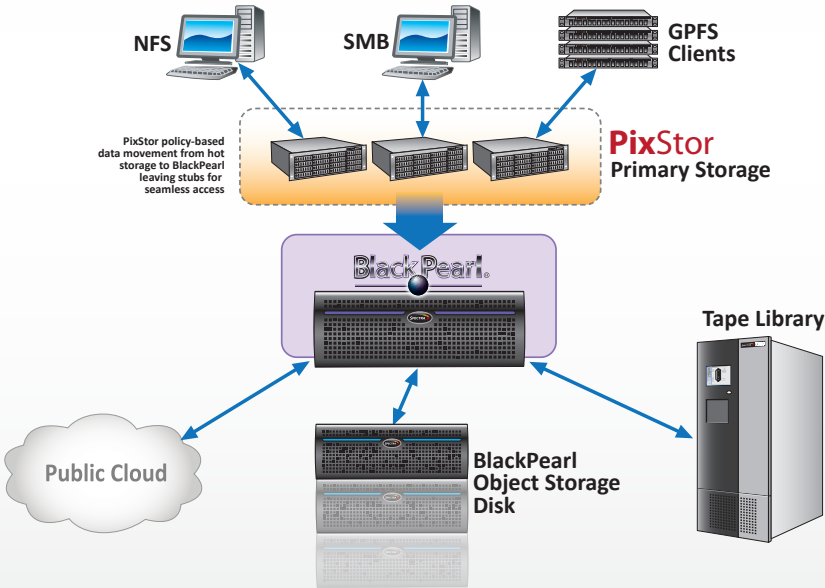
Benefits

- Eases over-subscription of production/primary storage
- Massive cost savings
- Point-and-click access to data, anywhere
- Policy-based data management
- Metadata analytics and extraction

How do Ngenea and BlackPearl work together?

The BlackPearl and Ngenea integration provides seamless storage tiering from primary storage to BlackPearl within user's Spectrum Scale and PixStor environments, without having to rely on complicated software packages. Providing a single, simple ingest point, data flow is managed to each storage tier, while preserving easy access to content.

With tuneable policies, data movement back and forth between the file system and BlackPearl is both transparent and automatic, requiring little or no intervention from either users or administrators to migrate or retrieve data. Additionally, through the Ngenea metadata analytics dashboards, administrators are able to track the movement, cost and usage of capacity across all storage tiers.



BlackPearl System Specifications

- Performance
 - 300 MB/sec to 3 GigB/sec
- Database
 - 50 million to 1 billion objects
- Spectra tape library support: T50e through TFinity® ExaScale
- Drives and media – LTO, IBM® TS11XX
- Phone home support
- Seamless scaling
 - Nearline disk: up to 10.7PB of enterprise in a single rack
 - LTO -- 1 to 144 drives, and up to 53,460 slots, 641PB native (TFinity ExaScale)
 - IBM® TS11XX up to 144 drives, and up to 40,680 slots, 813PB native (TFinity ExaScale)

BlackPearl Solution Features:

- Multi-tiered storage (disk, tape, cloud)
- Seamless cloud integration
- Accommodates multi-tenancy
- Partial file restore (PFR)
- Tape eject for offsite DR
- Automatic tape repack
- Continuous data integrity check
- Proactive system monitoring
- Non-disruptive data migration
- Data management policies (Advanced Bucket Management)
 - Flexible data retention policies
 - Multiple copies
 - Program grouping
- Automatic backup of all databases

Disaster Recovery Features:

- Open standard LTFS
- Disaster recovery copies
 - Remote BlackPearl, cloud, ejected tape for offsite disaster recovery
- Database backup:
 - BlackPearl database
- Easy failover to remote BlackPearl
- Alternate recovery path for assets

System Requirements



Basic Setup

A BlackPearl must be configured and available for network communications within Ngenea. The BlackPearl host name, access key, and security key must be set up for the plugin. The Spectra Logic Ngenea plugin requires BlackPearl 3.0.1 or later.

pixitmedia Requirements

- Spectrum Scale 4.2.2 or higher
- CentOS/RHEL 7
- Spectra Logic BlackPearl



Installation Overview

Spectrum Scale or New PixStor customers will be shipped a dedicated physical Ngenea appliance - with all required software pre-installed and ready-to-go.

Existing customers will be provided a software package for deployment of Ngenea to their existing infrastructure.

Need assistance? Call Pixit Media directly.