



# IPV Curator and BlackPearl® storage solution

## Spectra BlackPearl® Archive for IPV Workflows

Spectra's BlackPearl® Converged Storage System enables IPV users to simply and affordably store content on premise while utilizing any number of storage options like tape, disk, public cloud and even in a hybrid cloud storage platform.

### Solution Benefits

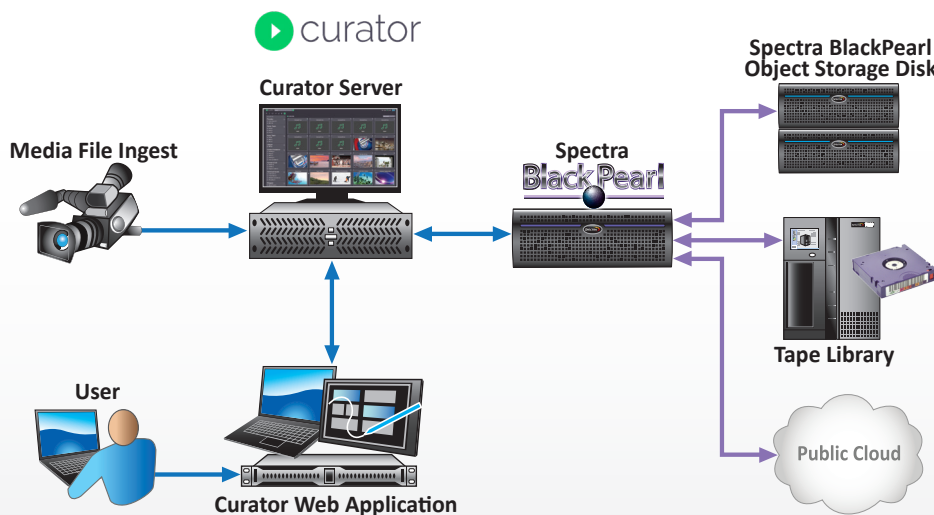
- Seamless integration without the need for middleware
- Easy plug-and-play deployment
- Simplified and streamlined workflow
- Cost-savings
- Simple storage platform

## How does BlackPearl fit into the IPV Curator workflow?

By combining leading media and archive management systems, IPV and Spectra deliver a cost-effective, integrated solution for media organizations to produce better content and manage their storage more efficiently. With the integrated solution, users can work from any location to organize and find media, edit and collaborate to create new content, and distribute finished assets to any platform for delivery. Users can archive their content directly within the IPV Curator interface to a BlackPearl and its supported technologies including disk, tape and/or public cloud. Curator and BlackPearl simplify an organization's archiving process by providing a single portal of all content that is being managed, no matter the location.

### How does it work?

Through Curator's Process Engine, custom workflows can be created and users can set specific media policies to automate workflows. Using the Device Director, users connect IPV Curator and BlackPearl by entering the secret key, access ID, hostname and bucket policies. The Device Director will also show status of various jobs (archives, restore activity, etc.) between Curator and a BlackPearl.



## BlackPearl System Specifications

- Performance
  - 300 MB/sec to 3 GigB/sec
- Database
  - 50 million to 1 billion objects
- Spectra tape library support: T50e through TFinity® ExaScale
- Drives & media – LTO, IBM® TS11XX
- Phone home support
- Seamless scaling
  - Nearline disk: over 10PB of enterprise data in a single rack
  - LTO -- 1 to 144 drives, and up to 53,460 slots, 641PB native (TFinity ExaScale)
  - IBM® TS11XX up to 144 drives, and up to 40,680 slots, 813PB native (TFinity ExaScale)

## BlackPearl Solution Features:

- Multi-tiered storage (disk, tape, cloud)
- Seamless cloud integration
- Multi-tenant
- Partial file restore (PFR)
- Tape eject for offsite DR
- Automatic tape repack\*
- Continuous data integrity check
- Proactive system monitoring
- Non-disruptive data migration
- Data management policies (Advanced Bucket Management)
  - Flexible data retention policies
  - Multiple copies
  - Program grouping
- Automatic backup of all databases
- Archive non-managed assets via BlackPearl® Eon Browser

## Disaster Recovery Features:

- Open standard LTF5
- Disaster recovery copies
  - Remote BlackPearl, cloud, ejected tape for offsite disaster recovery
- Database backup:
  - BlackPearl database
  - IPV Curator database\*
- Easy failover to remote BlackPearl
- Alternate recovery path for assets

# System Requirements

## About the Solution

With IPV Curator and Spectra Logic BlackPearl, users can migrate away from legacy archive systems to a platform built for today's modern media organization. The platform's built-in intelligence ensures that your content resides on the most appropriate storage target whether that is tape, disk or the cloud. Through Curator's contextual metadata and BlackPearl's flexible storage, assets are archived based on not only age, but also usage, business needs and relevance.



### Basic Setup

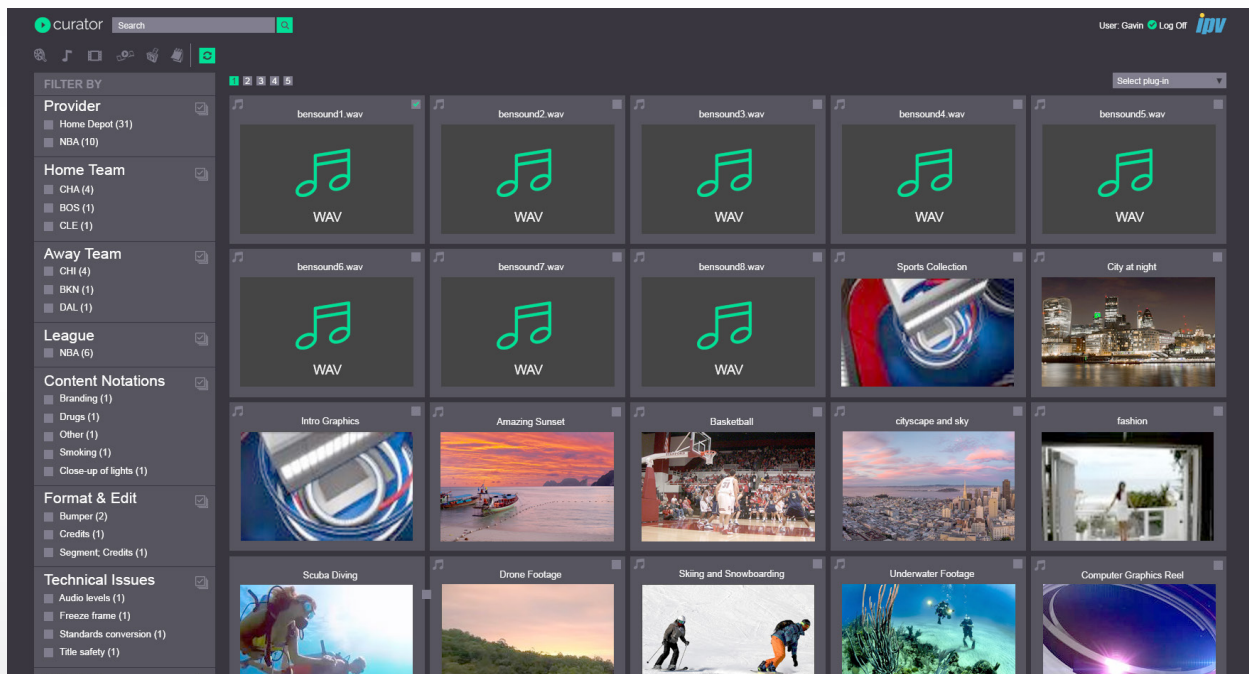
A BlackPearl (version 3.3.1 or later) must be configured and available for network communications with Curator. The BlackPearl hostname, access key and security key must be configured for the S3 plugin within Curator.

No other software installation or configuration is required.



### Deployment Options

Curator can be hosted in almost any environment. If you've already invested in local infrastructure or have particular security requirements, Curator can be deployed on-premise. Alternatively, choose full cloud for flexibility and scalability, or hybrid-cloud to get the best of both environments. The Black Pearl Connector is available with any deployment option.



## Installation Overview

The IPV Curator and Archive application is provided as an installer allowing the BlackPearl plugin to be included during the standard installation. Once completed, the user enters the connection details for BlackPearl service into the application's configuration. Manual, automated or intelligent purge rules are configured, enabling data to move between the storage tiers.

### Spectra Logic

6285 Lookout Road • Boulder, CO • 80301 • USA  
 303-449-6400 • 800-833-1132  
 www.spectralogic.com • Email: sales@spectralogic.com

### IPV

Conqueror House • Vision Park • Chivers Way • Histon • CB24 9ZR • UK  
 +44 1223 202970  
 www.ipv.com • Email: sales@ipv.com