

Tape Libraries



Preserve, protect & defend enterprise data at scale

[Spectra® tape libraries](#) deliver proven reliability, superior scalability, and optimal performance for protecting data at scale.

Whether files or objects, backups, or active- and long-term archives, Spectra tape-based solutions affordably safeguard your data — from terabytes to exabytes.

Spectra is the brand trusted by more than 10,000 customers to preserve, protect, and defend the world's most valuable data — theirs.



Extreme Scalability



- Provides high capacity, high performance or both
- Scales by easily adding tape drives and media, and without interruption

Ransomware Resilient



- Encrypts data on tape for greater cyber resiliency
- Protects against cyber threats with Write-Once, Read-Many (WORM), and air gapping

Extended Longevity



- Preserves and protects data for multiple decades
- Supports a comprehensive tape drive roadmap for a promising future of tape technology

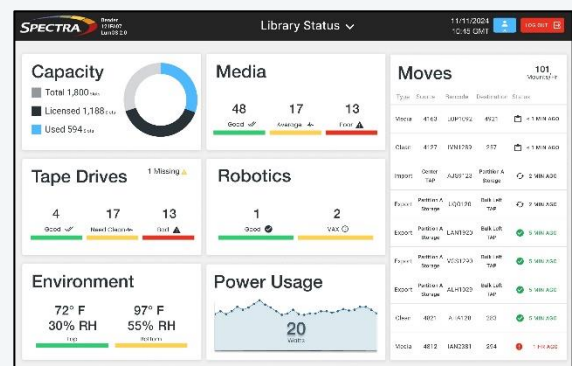
Lowest TCO



- Delivers more cost-effective storage than disk or cloud
- Adapts to any environment by supporting multiple protocols, applications, and operating systems

Comprehensive manageability and monitoring for outstanding reliability

Our library management software applications deliver a comprehensive feature set spanning: security, monitoring, redundancy, reporting, library partitioning, and on-demand capacity. Proactive monitoring of media, system components, and data integrity deliver reliability you can count on.



LumOS Library Management Software

Tape Library Features

Feature	Benefits
Assisted Self Maintenance (ASM)	Customers can easily replace common components and keep them onsite to ensure maximum uptime.
Auto Drive Clean	Libraries automatically clean your drives based on needs and usage, helping keep your data protected from media errors.
Certified Tape Media	Spectra Certified Media is delivered ready for peak performance and continuously monitored for quality. Every cartridge is cleaned, tested, and verified before use and comes with a Lifetime Warranty.
Data Integrity Verification¹	The PreScan process ensures that new media is ready to accept data, and the QuickScan process verifies data integrity periodically or on demand.
Drive Lifecycle Management	Monitors and reports drive usage and performs verification tests to help prevent drive failures.
Energy Monitoring	Spectra library management software tracks power use over time and by component. The information may be used to adjust and optimize power use.
Ethernet Connectivity²	Utilize your existing Ethernet infrastructure for easy operation, lower management overhead, and cost savings. Create remote copies with iSCSI/iSER for greater data protection and resilience.
Industry-Leading Storage Density	The Spectra TeraPack [®] tape magazine design results in a smaller library footprint, allowing you to store more data in a smaller space. TeraPack magazines also improve media handling by reducing the time spent loading tapes into a library by 90%.
Integrated Encryption & Key Management	Highest level of security with AES-256 encryption; key management for LTO-5 through LTO-9-based encryption; built-in Encryption Key Management works with all major media types and does not require an external server.
Integrated System Camera³	Optional internal cameras aid with monitoring, visual diagnosis and troubleshooting.
Integrated Partitioning	Shared Library Services (SLS) support multiple partitions within a single library. With SLS, a single Spectra library can appear as multiple libraries to the backup environment.
Library Lifecycle Management	Manage the health of your library with utilization metrics that track the expected useful life of robotics, filters, and other critical library hardware components.
Local & Remote Management	Intuitive, color touch-screen interface or a Remote Library Controller (RLC) interface accessible via any web browser provides ease of use and simplified management.
Media Lifecycle Management	Integrated, proactive media management tool records and reports over 40 data points every time a tape is loaded, keeping your tapes and data protected.
Proactive Diagnostics & Monitoring	Library self-monitoring features notify you and the SpectraGuard [®] support team by email to help you proactively manage your library and minimize downtime.
REST Interface	Streamline or automate any library action to run on a recurring schedule or on demand, further reducing staff time needed to manage the library.
Transform Tape Connectivity⁴	Simplify tape connectivity, lower infrastructure costs, and increase operational flexibility with the industry's first 24G optical SAS switch.

1. TFinity[®], T950, and Spectra Cube libraries only. Requires use of [Spectra Certified Media](#).

2. Ethernet connectivity requires optional Ethernet-to-SAS bridge.

3. TFinity, T950, and Stack libraries only.

4. Requires the Spectra Logic OSW-2400 Optical SAS Switch.

Tape Library Specifications



Library	Spectra Stack	Spectra Cube	Spectra T950	Spectra TFinity Plus	
Max Media/Slot Count	560	1,670	10,020 (LTO) (8-frames)	56,400 (LTO) (45-frames)	42,930 (TS1170) (45-frames)
Max Native Capacity ¹	10.1PB	30.1PB	180.3PB	1EB	2.2EB
Max Compressed Capacity ¹	25.2PB	75.2PB	450.9PB	2.5EB	6.4EB
Max Drives ²	42 HH 21 FH	30 HH 16 FH	120	168	168
Max Native Throughput (TB/hour)	45.4 HH 30.2 FH	32.4 HH 23.0 FH	172.8	241.9	241.9
Max Compressed Throughput (TB/hour)	113.4 HH 68.0 FH	81.0 HH 51.8 FH	388.8	544.3	544.3
Max SLS Partitions	20	16	16	16	16
Tape Drives Supported	LTO	LTO	LTO	LTO, IBM TS11XX, and Oracle® T10000	
Dual Robotics	N/A	N/A	N/A	Yes	Yes

¹ Capacities and throughputs are based on LTO-9 and IBM TS1170 tape technology. Compression ratio for LTO is 2.5:1. Compression ratio for TS1170 is 3:1. ² Drive types are full height unless noted.

About Spectra Logic Corporation

Spectra Logic modernizes IT infrastructures to preserve, protect and defend data, from days to decades, whether on-premises, in a single cloud, across multiple clouds or in all locations at once. Our cost-effective solutions help organizations efficiently manage, migrate and store long-term data, from terabytes to exabytes, with features that make it ransomware resilient.

© Spectra Logic. All trademarks and registered trademarks are properties of their respective owners.
Toll Free: 800-833-1132 • 303-449-6400 • 6285 Lookout Road • Boulder, CO 80301 USA

SPECTRA
www.spectralogic.com