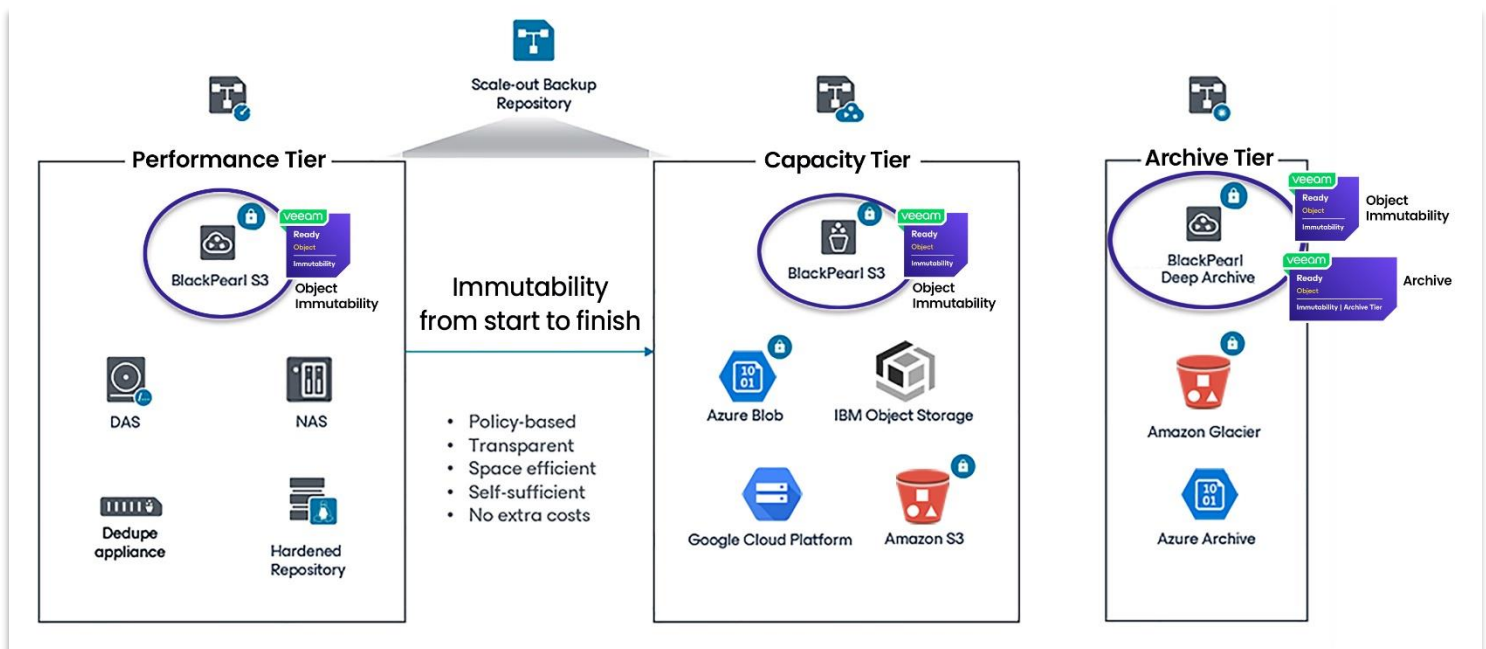


# Optimizing Veeam with Spectra Storage



## Spectra Logic offers the Broadest Storage Solutions for your Veeam® SOBR

Spectra BlackPearl® S3 object-based disk and object-based tape provide horizontal scaling within the Veeam Scale-Out Backup Repository (SOBR). BlackPearl S3, all-flash object storage, when configured as a Performance Tier, seamlessly migrates data to a BlackPearl S3 Capacity Tier for long-term storage requirements. Its versatility enables support for various tasks and jobs executed by Veeam Backup & Replication. Spectra's object-based tape, configured as an on-premises Archive Tier, is specifically tailored for long-term retention spanning years. Cost savings are achieved by storing all unique Grandfather-Father-Son (GFS) backups on the most resilient and cost-effective storage solution available.



**End-to-end On-Prem Storage Solutions for every Veeam tier:  
Performance Tier – Capacity Tier – Archive Tier**

# Preserve.

## Veeam Performance Tier optimized by Spectra Storage

### Performance Tier Features & Benefits

Spectra BlackPearl S3 object storage empowers Veeam with high-performance capabilities that accelerate and secure critical workloads like Instant Recovery.

- Enhanced security to meet evolving storage needs for superior ransomware resiliency
- Multi-factor authentication to protect against unauthorized access
- Object Lock and versioning for data immutability to eliminate accidental or unauthorized data manipulation

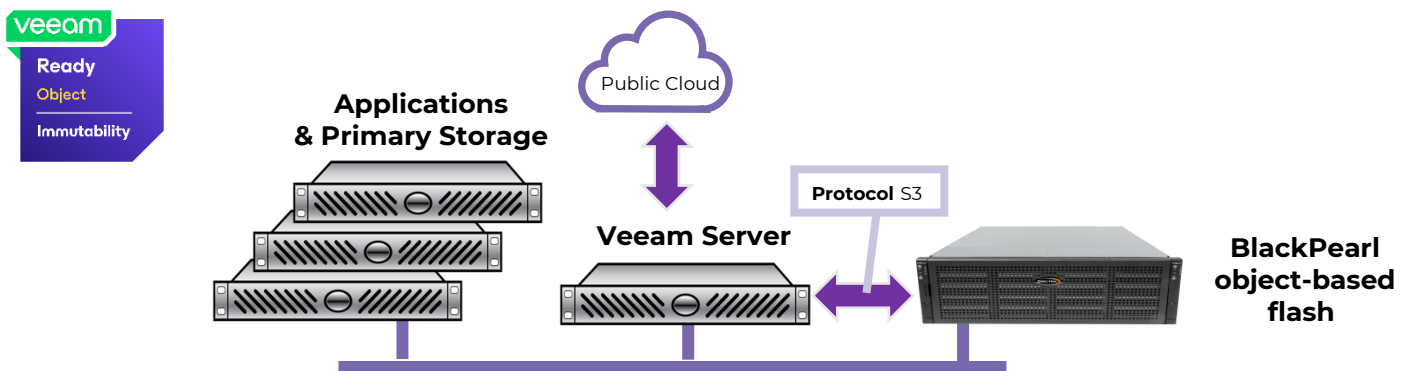
The Spectra Logic offers the BlackPearl product family in multiple all-flash configurations to meet high-performance, low-latency storage requirements.

- Maintain full access and control over your data, with an enhanced Active-Standby availability architecture that minimizes downtime and maximizes reliability
- Optimize for low-latency access to data and stringent RTOs/RPOs, accelerating backup and recovery operations for critical workloads
- Maximize the efficiency of restores and Instant Recovery. Enable hundreds of virtual machines in just minutes

### All-Flash Deployment

| Item         | BlackPearl X-Series  |
|--------------|--|
| Processor    | AMD (Rome) CPU   |
| Availability | Single node or Active/Standby  |
| Dimensions   | 2U   |
| Power        | Dual 1300W PS  |
| Network      | 1x 1 GbE Mgmt<br>2x 40/100 GbE   |
| Connectivity | 2x PCIe (Gen4) slots<br>2x 4-port 12Gb SAS<br>2x 4-port 16Gb FC<br>2x 4-port 32Gb FC |
| Capacity     | 24x 2.5" SSD   |
| HDD's        | N/A  |
| SSD's        | 1.6, 6.4, 30TB NVMe (U.2)  |

## Fast, Available Performance Tier Workflow



# Protect.

## Veeam Capacity Tier optimized by Spectra Storage

### Capacity Tier Features & Benefits

Spectra BlackPearl S3 object storage enhances Veeam with secure capacity capabilities that protect dynamic growing critical workloads like backup and recovery.

- Policy-based data optimization: Locations, Redundancy, Retention, Expiration, Synchronization
- Dynamic data movement and replication across on-prem and cloud

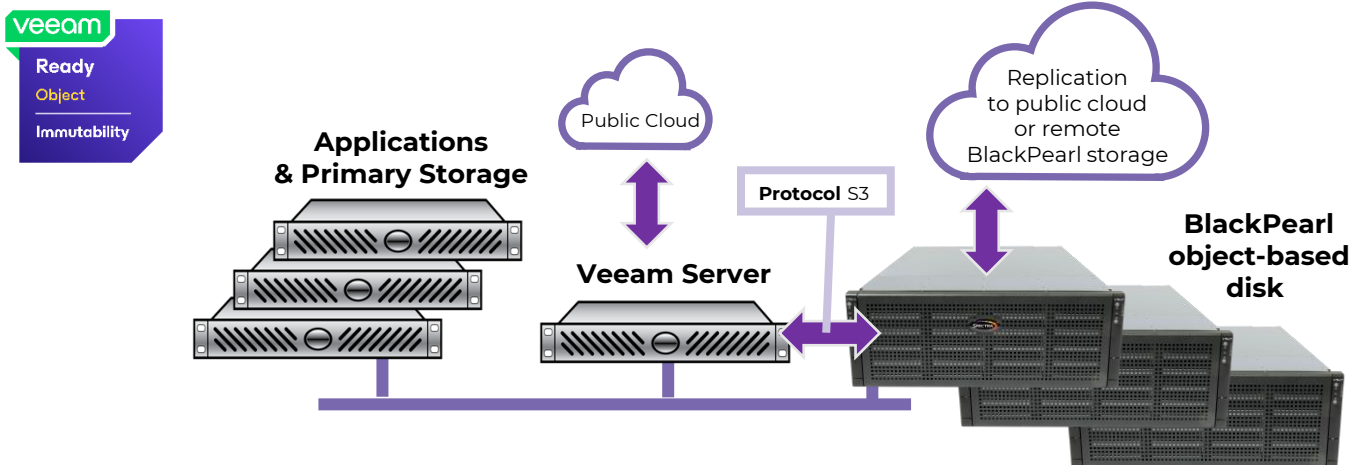
Spectra Logic offers the BlackPearl product family in multiple hybrid flash and disk configurations to meet multi-tier, accessible storage requirements.

- Choose a single node or Active-Standby availability architecture that maximizes access to your data
- Realize on-premises, future-proof storage by combining performance with affordable, efficient scale-up expansion to 20 petabytes of raw disk storage in a single rack
- Offers a scalable capacity tier for long-term storage, enabling effortless management of expanding data volumes.

### Hybrid Flash & Disk Deployment

| Item         | BlackPearl H3300   |
|--------------|--|
| Processor    | AMD (Milan) CPU  |
| Availability | Single node or Active/Standby  |
| Dimensions   | 4U   |
| Power        | Dual 1200W PS  |
| Network      | 1x 1 GbE Mgmt;<br>1x 1 GbE IPMI<br>2x 10/25 GbE or<br>2x 40/100 GbE                  |
| Connectivity | 6x PCIe (Gen4) slots<br>5x 4-port 12Gb SAS<br>5x 4-port 16Gb FC<br>5x 4-port 32Gb FC |
| Capacity     | 24x 3.5" HDD<br>4x 2.5" SSD  |
| HDD's        | 8, 20, 22TB SAS<br>8, 20TB SAS (SED)   |
| SSD's        | 1.6, 6.4, 30TB<br>NVMe (U.2)   |

## Scalable, Immutable Capacity Tier Workflow



# Defend.

## Veeam On-Prem Archive Tier optimized by Spectra Storage

### Archive Tier Features & Benefits

Spectra tape solutions and BlackPearl S3 object storage empower Veeam with secure archive capabilities that defend data for compliance and long-term retention.

- Easily maintain and manage sensitive information or proprietary data
- Designed for the secure long-term retention of large unstructured datasets and the unique data held in GFS backups
- Leverage an ideal archive tier for Veeam, offering a cost-effective, very low total cost of ownership (TCO) storage without sacrificing accessibility

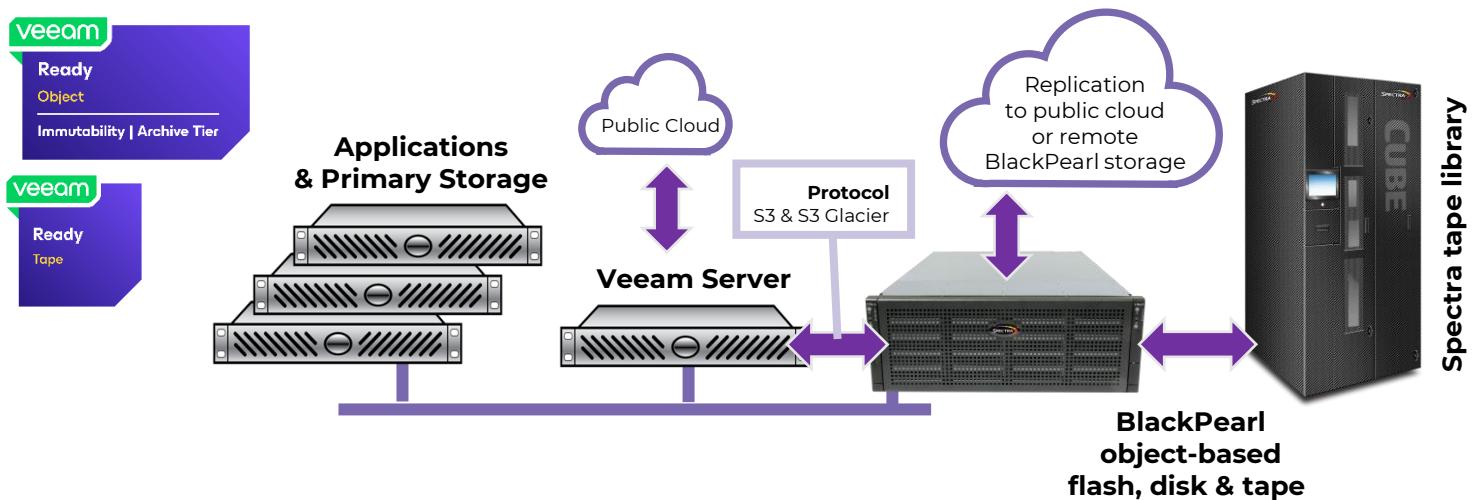
Spectra Logic offers multiple object-based disk and tape configurations to meet dynamic Archive Tier requirements.

- Enterprise-level object-based tape scales to multiple exabytes in a single system
- Ransomware resiliency with data immutability and physical air-gaping of data
- Eliminate costly and unexpected cloud data retrieval fees with on-premises speed and access

### Tape Library Deployment

| Spectra Library                            | Stack             | Cube™            | TFinity® Plus |                 |
|--|-------------------|------------------|---------------|-----------------|
| <b>Max Media Slot Count</b>                | 560 (LTO)         | 1,670 (LTO)      | 56,400 (LTO)  | 42,930 (TS1170) |
| <b>Max Native Capacity</b>                 | 10.1PB            | 30.1PB           | 1EB           | 2.2EB           |
| <b>Max Compressed Capacity</b>             | 25.2PB            | 75.2PB           | 2.5EB         | 6.4EB           |
| <b>Max Drives</b>                          | 42 HH<br>21 FH    | 30 HH<br>16 FH   | 168           | 168             |
| <b>Max Native Throughput (TB/hour)</b>     | 45.4HH<br>30.2FH  | 32.4HH<br>23.0FH | 241.9         | 241.9           |
| <b>Max Compressed Throughput (TB/hour)</b> | 113.4HH<br>68.0FH | 81.0HH<br>51.8FH | 544.3         | 544.3           |
| <b>Dual Robotics</b>                       | N/A               | N/A              | Yes           | Yes             |

## Flexible, Cost-Effective Archive Tier Workflow



### About Spectra Logic Corporation

Spectra Logic modernizes IT infrastructures to preserve, protect and defend data, from days to decades, whether on-premises, in a single cloud, across multiple clouds or in all locations at once. Our cost-effective solutions help organizations efficiently manage, migrate and store long-term data, from terabytes to exabytes, with features that make it ransomware resilient