

LumOS Upgrade for Spectra T950 Libraries



[LumOS library management software](#), the next-generation system for managing, monitoring, and controlling Spectra tape libraries, is now available for the Spectra® T950 tape library. Following successful Spectra TFinity® series upgrades, LumOS software enhances functionality, reliability, and speed up to 20 times over BlueScale® software. Spectra T950 users can now enjoy an intuitive interface, robust security, and seamless access. Upgrading to LumOS software future-proofs your Spectra T950 library, making data management efficient and resilient for the years ahead.

Intuitive, Feature-Rich User Interface



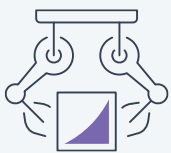
- Provides a modern interface for secure local and remote access
- Completes multiple tasks simultaneously through multi-threaded operations

Preserve Your Storage Investment



- Easily upgrade your existing Spectra T950 library to LumOS software
- Extend the useful life of older Spectra T950 libraries with an optional full mechanical refresh

Streamline Operations and Reporting



- Perform any library function including software upgrades via full REST API
- Predicts and helps prevent failures with library and drive lifecycle management

Enhanced Security

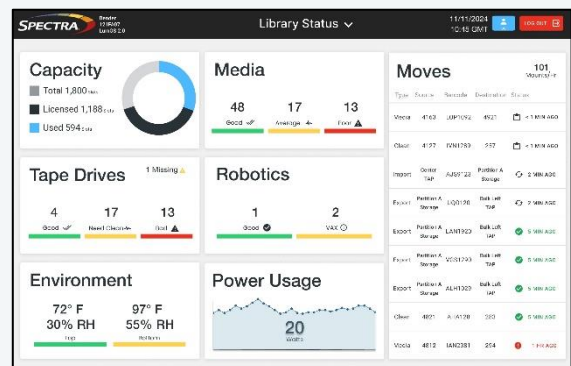


- Protects with AES-256 encryption & key management for LTO drive-based encryption
- Linux-based OS incorporates all security patches in regular vulnerability-tested updates

Greater Productivity

LumOS software supports all current BlueScale functionality and includes many new features designed to increase productivity and enhance the reliability of Spectra T950 libraries. With LumOS software, you can:

- Perform most operations up to 20X faster
- Manage locally, remotely or programmatically
- Streamline or automate any task
- Gather log files in seconds



LumOS Library Management Software

LumOS Software Overview

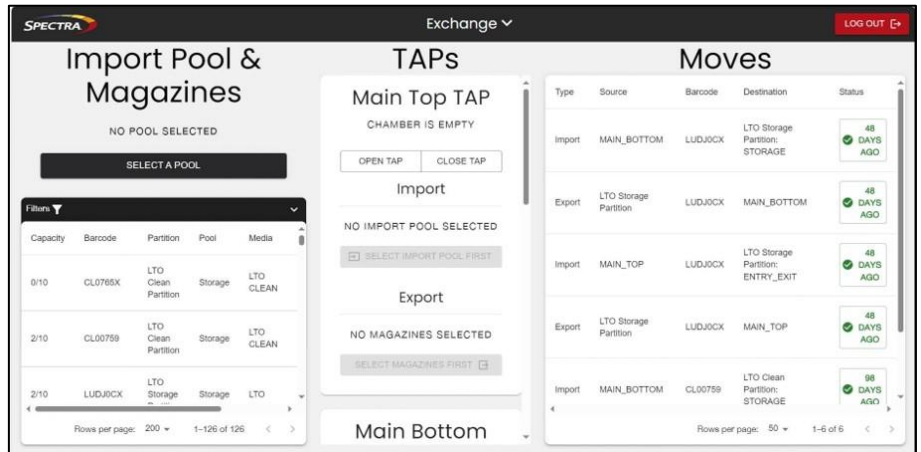
LumOS Library Management Software

LumOS library management software transforms the user experience through a redesigned interface and an extensible, Linux-based software architecture that dramatically improves the performance of library functions, enhances security, and ensures a regular cadence of new functionality.

LumOS software supports a full REST API. Any library function can be automated, from downloading full media health databases and log sets to performing drive firmware or software upgrades.

Previous front-panel-only operations can now be performed remotely or automated via REST API, further reducing the time and resources needed to manage the library.

A multi-threaded design accelerates actions such as log retrieval and partition management, reducing time to less than a minute.



Manage & move TeraPack tape magazines

LumOS software supports Fibre Channel and SAS drive interfaces, while optional Ethernet-to-SAS bridges can eliminate the need for dedicated storage area network connections, significantly reducing cost and complexity.

All LumOS software releases include the latest Linux security updates as of the release date. A comprehensive scan is also performed against each release to ensure no known security vulnerabilities. A scan report is available with each release.

Spectra LumOS Library Control Module Specifications

Item	Specifications
Processor	Core i3 7100U – dual core Benchmark score: 2,718
Processor Frequency	2.24 Ghz
RAM	8GB DDR4/2400
Boot Drive	256GB GenV m.2 NVMe 1.1GB/sec transfer rate
Monitor Interface	HDMI
External I/O	USB 3.0
Display	10.1" 1080p resolution PCAP touchscreen with multi-touch

About Spectra Logic Corporation

Spectra Logic modernizes IT infrastructures to preserve, protect and defend data, from days to decades, whether on-premises, in a single cloud, across multiple clouds or in all locations at once. Our cost-effective solutions help organizations efficiently manage, migrate and store long-term data, from terabytes to exabytes, with features that make it ransomware resilient.