



# Tape Library Portfolio

## Preserve, protect & defend enterprise data at scale

[Spectra® tape libraries](#) deliver proven reliability, superior scalability, and optimal performance for protecting data at scale.

Whether files or objects, backups, or active- and long-term archives, Spectra tape-based solutions affordably safeguard your data — from terabytes to exabytes.

Spectra is the brand trusted by more than 10,000 customers to preserve, protect, and defend the world's most valuable data — theirs.

### Extreme Scalability



- Provides high capacity, high performance or both
- Scales by easily adding tape drives and media, and without interruption

### Ransomware Resilient



- Encrypts data on tape for greater cyber resiliency
- Protects against cyber threats with Write-Once, Read-Many (WORM), and air gapping

### Extended Longevity



- Preserves and protects data for multiple decades
- Supports a comprehensive tape drive roadmap for a promising future of tape technology

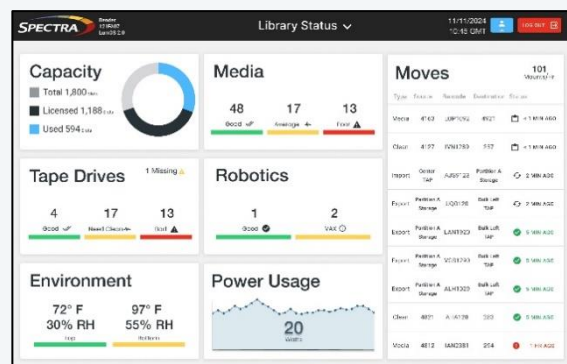
### Lowest TCO



- Delivers more cost-effective storage than disk or cloud
- Adapts to any environment by supporting multiple protocols, applications, and operating systems

## Comprehensive manageability and monitoring for outstanding reliability

Our library management software applications deliver a comprehensive feature set spanning: security, monitoring, redundancy, reporting, library partitioning, and on-demand capacity. Proactive monitoring of media, system components, and data integrity delivers reliability you can count on.



LumOS Library Management Software

# Tape Library Features

Feature	Benefits
<b>Assisted Self Maintenance (ASM)</b>	Customers can easily replace common components and keep them onsite to ensure maximum uptime.
<b>Auto Drive Clean</b>	Libraries automatically clean your drives based on needs and usage, helping keep your data protected from media errors.
<b>Certified Tape Media</b>	Spectra Certified Media is delivered ready for peak performance and continuously monitored for quality. Every cartridge is cleaned, tested, and verified before use and comes with a Lifetime Warranty.
<b>Data Integrity Verification<sup>1</sup></b>	The PreScan process ensures that new media is ready to accept data, and the QuickScan process verifies data integrity periodically or on demand.
<b>Drive Lifecycle Management<sup>2</sup></b>	Monitors and reports drive usage and performs verification tests to help prevent drive failures.
<b>Energy Monitoring<sup>2</sup></b>	Spectra library management software tracks power use over time and by component. The information may be used to adjust and optimize power use.
<b>Industry-Leading Storage Density<sup>2</sup></b>	The Spectra TeraPack <sup>®</sup> tape magazine design results in a smaller library footprint, allowing you to store more data in a smaller space. TeraPack magazines also improve media handling by reducing the time spent loading tapes into a library by 90%.
<b>Integrated Encryption &amp; Key Management<sup>3</sup></b>	Highest level of security with AES-256 encryption; key management for LTO-5 through LTO-10-based encryption; built-in Encryption Key Management works with all major media types and does not require an external server.
<b>Integrated System Camera<sup>4</sup></b>	Optional internal cameras aid with monitoring, visual diagnosis and troubleshooting.
<b>Integrated Partitioning</b>	Shared Library Services (SLS) support multiple partitions within a single library. With SLS, a single Spectra library can appear as multiple libraries to the backup environment.
<b>Library Lifecycle Management</b>	Manage the health of your library with utilization metrics that track the expected useful life of robotics, filters, and other critical library hardware components.
<b>Local &amp; Remote Management<sup>5</sup></b>	Intuitive, color touch-screen interface or a Remote Library Controller (RLC) interface accessible via any web browser provides ease of use and simplified management.
<b>Media Lifecycle Management<sup>3</sup></b>	Integrated, proactive media management tool records and reports over 40 data points every time a tape is loaded, keeping your tapes and data protected.
<b>Proactive Diagnostics &amp; Monitoring</b>	Library self-monitoring features notify you and the SpectraGuard <sup>®</sup> support team by email to help you proactively manage your library and minimize downtime.
<b>REST Interface</b>	Streamline or automate any library action to run on a recurring schedule or on demand, further reducing staff time needed to manage the library.
<b>Transform Tape Connectivity<sup>6</sup></b>	Simplify tape connectivity, lower infrastructure costs, and increase operational flexibility with the industry's first 24G optical SAS switch.

1. Available with TFinity<sup>®</sup>, T950, and Spectra Cube libraries. Requires use of [Spectra Certified Media](#).

2. Available on TFinity, T950, and Cube libraries.

3. Available on TFinity, T950, Cube, and Stack libraries.

4. Available on TFinity, T950, and Stack libraries.

5. Color touchscreen not available on SL3 library.

6. Requires the Spectra Logic OSW-2400 Optical SAS Switch.

# Tape Library Specifications



Spectra SL3



Spectra Stack



Spectra Cube



Spectra T950



Spectra TFinity Plus

Library	Spectra SL3	Spectra Stack	Spectra Cube	Spectra T950	Spectra TFinity Plus	
Max Media/Slot Count <sup>1</sup>	640	560	1,670	10,020 (8-frames)	56,400 (LTO) (45-frames)	42,930 (TS1170) (45-frames)
Max Native Capacity <sup>1</sup>	19.2 PB	16.8 PB	50.1 PB	300.6 PB	1.6 EB	2.2 EB
Max Compressed Capacity <sup>1</sup>	48.0 PB	42.0 PB	125.3 PB	751.5 PB	4.2 EB	6.4 EB
Max Drives <sup>2</sup>	48 HH 16 FH	42 HH 21 FH	30 HH 16 FH	120	168	168
Max Native Throughput (TB/hour) <sup>3, 4, 5</sup>	51.8 HH 23.0 FH	45.4 HH 30.2 FH	32.4 HH 23.0 FH	172.8	241.9	241.9
Max Compressed Throughput (TB/hour)	129.5 HH 69.1 FH	113.4 HH 90.7 FH	81.0 HH 69.1 FH	518.4	725.8	544.3
Max SLS Partitions	20	20	16	16	16	16
Tape Drives Supported	LTO	LTO	LTO	LTO	LTO, IBM TS11XX, and Oracle® T10000	
Robotics	Single	Single	Single	Single	Dual	Dual

<sup>1</sup> Capacities are based on LTO-10 for Spectra SL3, Stack, Cube, and T950. TFinity Plus is LTO-10 and TS1170.

<sup>2</sup> Drive types are full height unless noted.

<sup>3</sup> Throughput is based on LTO-10 for Spectra Stack, Cube, and T950.

<sup>4</sup> Throughput is based on LTO-10 FH and LTO-9 HH for Spectra SL3.

<sup>5</sup> Throughput is based on LTO-10 and IBM TS1170 tape technology for Spectra TFinity Plus.

## About Spectra Logic Corporation

Spectra Logic modernizes IT infrastructures to preserve, protect and defend data, from days to decades, whether on-premises, in a single cloud, across multiple clouds or in all locations at once. Our cost-effective solutions help organizations efficiently manage, migrate and store long-term data, from terabytes to exabytes, with features that make it ransomware resilient.

© Spectra Logic. All trademarks and registered trademarks are properties of their respective owners.

Toll Free: 800-833-1132 • 303-449-6400 • 6285 Lookout Road • Boulder, CO 80301 USA



[www.spectralogic.com](http://www.spectralogic.com)