

# Tape Libraries

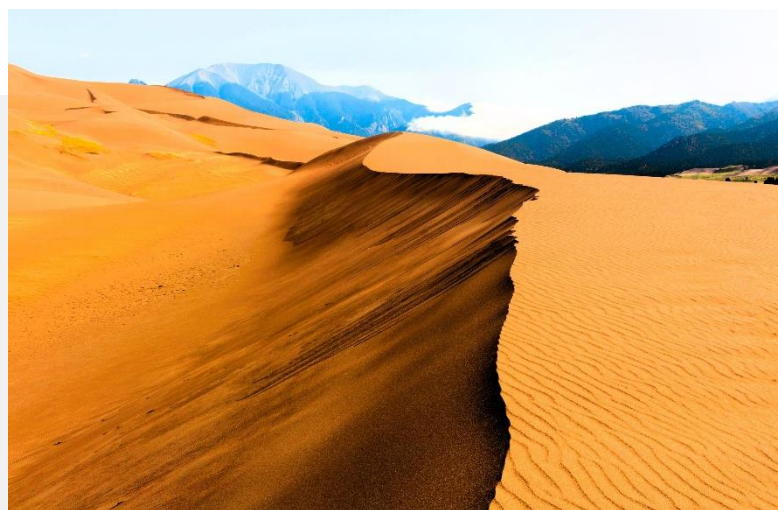


Preserve, protect & defend enterprise data at scale

[Spectra® tape libraries](#) deliver proven reliability, superior scalability, and optimal performance for protecting data at scale.

Whether files or objects, backups, or active- and long-term archives, Spectra tape-based solutions affordably safeguard your data — from terabytes to exabytes.

Spectra is the brand trusted by more than 10,000 customers to preserve, protect, and defend the world's most valuable data — theirs.



## Extreme Scalability



- Provides high capacity, high performance or both
- Scales by easily adding tape drives and media, and without interruption

## Ransomware Resilient



- Encrypts data on tape for greater cyber resiliency
- Protects against cyber threats with Write-Once, Read-Many (WORM), and air gapping

## Extended Longevity



- Preserves and protects data for multiple decades
- Supports a comprehensive tape drive roadmap for a promising future of tape technology

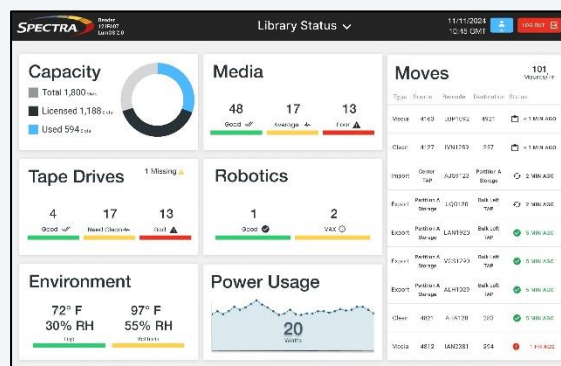
## Lowest TCO



- Delivers more cost-effective storage than disk or cloud
- Adapts to any environment by supporting multiple protocols, applications, and operating systems

## Comprehensive manageability and monitoring for outstanding reliability

Our library management software applications deliver a comprehensive feature set spanning: security, monitoring, redundancy, reporting, library partitioning, and on-demand capacity. Proactive monitoring of media, system components, and data integrity delivers reliability you can count on.



LumOS Library Management Software

# Tape Library Features

Feature	Benefits
<b>Assisted Self Maintenance (ASM)</b>	Customers can easily replace common components and keep them onsite to ensure maximum uptime.
<b>Auto Drive Clean</b>	Libraries automatically clean your drives based on needs and usage, helping keep your data protected from media errors.
<b>Certified Tape Media</b>	Spectra Certified Media is delivered ready for peak performance and continuously monitored for quality. Every cartridge is cleaned, tested, and verified before use and comes with a Lifetime Warranty.
<b>Data Integrity Verification<sup>1</sup></b>	The PreScan process ensures that new media is ready to accept data, and the QuickScan process verifies data integrity periodically or on demand.
<b>Drive Lifecycle Management</b>	Monitors and reports drive usage and performs verification tests to help prevent drive failures.
<b>Energy Monitoring</b>	Spectra library management software tracks power use over time and by component. The information may be used to adjust and optimize power use.
<b>Industry-Leading Storage Density</b>	The Spectra TeraPack <sup>®</sup> tape magazine design results in a smaller library footprint, allowing you to store more data in a smaller space. TeraPack magazines also improve media handling by reducing the time spent loading tapes into a library by 90%.
<b>Integrated Encryption &amp; Key Management</b>	Highest level of security with AES-256 encryption; key management for LTO-5 through LTO-10-based encryption; built-in Encryption Key Management works with all major media types and does not require an external server.
<b>Integrated System Camera<sup>2</sup></b>	Optional internal cameras aid with monitoring, visual diagnosis and troubleshooting.
<b>Integrated Partitioning</b>	Shared Library Services (SLS) support multiple partitions within a single library. With SLS, a single Spectra library can appear as multiple libraries to the backup environment.
<b>Library Lifecycle Management</b>	Manage the health of your library with utilization metrics that track the expected useful life of robotics, filters, and other critical library hardware components.
<b>Local &amp; Remote Management</b>	Intuitive, color touch-screen interface or a Remote Library Controller (RLC) interface accessible via any web browser provides ease of use and simplified management.
<b>Media Lifecycle Management</b>	Integrated, proactive media management tool records and reports over 40 data points every time a tape is loaded, keeping your tapes and data protected.
<b>Proactive Diagnostics &amp; Monitoring</b>	Library self-monitoring features notify you and the SpectraGuard <sup>®</sup> support team by email to help you proactively manage your library and minimize downtime.
<b>REST Interface</b>	Streamline or automate any library action to run on a recurring schedule or on demand, further reducing staff time needed to manage the library.
<b>Transform Tape Connectivity<sup>3</sup></b>	Simplify tape connectivity, lower infrastructure costs, and increase operational flexibility with the industry's first 24G optical SAS switch.

1. TFinity<sup>®</sup>, T950, and Spectra Cube libraries only. Requires use of [Spectra Certified Media](#).

2. TFinity, T950, and Stack libraries only.

3. Requires the Spectra Logic OSW-2400 Optical SAS Switch.

# Tape Library Specifications



Library	Spectra Stack	Spectra Cube	Spectra T950	Spectra TFinity Plus	
Max Media/Slot Count <sup>1</sup>	560	1,670	10,020 (8-frames)	56,400 (LTO) (45-frames)	42,930 (TS1170) (45-frames)
Max Native Capacity <sup>1</sup>	16.8PB	50.1PB	300.6PB	1.6EB	2.2EB
Max Compressed Capacity <sup>1, 2</sup>	42.0PB	125.3PB	751.5PB	4.2EB	6.4EB
Max Drives <sup>3</sup>	42 HH 21 FH	30 HH 16 FH	120	168	168
Max Native Throughput <sup>1, 2</sup> (TB/hour)	45.4 HH 30.2 FH	32.4 HH 23.0 FH	172.8	241.9	241.9
Max Compressed Throughput (TB/hour)	113.4 HH 90.7 FH	81.0 HH 69.1 FH	518.4	725.8	544.3
Max SLS Partitions	20	16	16	16	16
Tape Drives Supported	LTO	LTO	LTO	LTO, IBM TS11XX, and Oracle® T10000	
Dual Robotics	N/A	N/A	N/A	Yes	Yes

1 Capacities and throughputs are based on LTO-10 for Spectra Stack, Cube, and T950.

2 Capacities and throughputs are based on LTO-10 and IBM TS1170 tape technology for Spectra TFinity Plus.

3 Drive types are full height unless noted.

## About Spectra Logic Corporation

Spectra Logic modernizes IT infrastructures to preserve, protect and defend data, from days to decades, whether on-premises, in a single cloud, across multiple clouds or in all locations at once. Our cost-effective solutions help organizations efficiently manage, migrate and store long-term data, from terabytes to exabytes, with features that make it ransomware resilient.

© Spectra Logic. All trademarks and registered trademarks are properties of their respective owners.

Toll Free: 800-833-1132 • 303-449-6400 • 6285 Lookout Road • Boulder, CO 80301 USA

