

LumOS Library Management Software



LumOS library management software is the advanced next-generation operating system for managing, monitoring, and controlling Spectra tape libraries. Based on a modern, extensible architecture, LumOS software delivers greater functionality, reliability, and performance, up to 20X that of the previous generation of library management software. LumOS software is designed to support and enhance Spectra libraries through future technology upgrades into the next decade and beyond.

Intuitive, Feature-Rich Interface



- Provides a modern interface for secure local and remote access
- Completes multiple tasks simultaneously through multi-threaded operations

Flexible Technology Upgrades



- Adapts to any environment; supports Fibre Channel, SAS and Ethernet connectivity¹
- Scales Capacity-on-Demand for dynamic addition of media slots

Streamline Operations and Reporting



- Automate any library function, including software upgrades via full REST API
- Predicts and helps prevent failures with library and drive lifecycle management

Enhanced Security

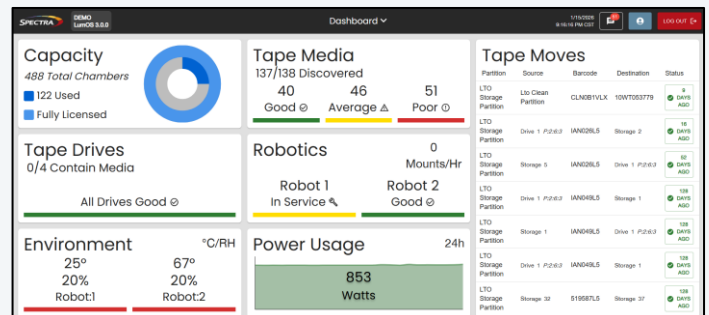


- Protects with AES-256 encryption & key management for LTO drive-based encryption
- Linux-based OS incorporates all security patches in regular vulnerability-tested updates

Comprehensive, Proactive Diagnostics

A comprehensive set of diagnostics proactively monitors the library's health, tape drives, media, and data to help prevent failures and assure rapid response when errors occur.

- Media lifecycle management and data integrity verification²
- Automatic drive cleaning for error reduction and extended drive life
- Automated email notifications and support ticketing



LumOS Library Management Software

1. Ethernet connectivity requires an optional Ethernet-to-SAS bridge.
2. TFinity®, Spectra T950, and Spectra Cube libraries only.

LumOS Software Overview

Features	Benefits
Automatic Drive Cleaning	Improves reliability by automating drive tracking and cleaning based on usage, helping protect your data from media errors.
AutoSupport	Continuously monitors the library's health and emails a support ticket if it detects problems that may impact the library's performance and reliability.
Capacity on Demand (CoD)	Based on your data storage growth needs, additional tape slots can be dynamically enabled via software while additional tape drives can be added to scale performance, all without downtime, tools, or service calls.
Data Encryption	Highest level of security with AES-256 encryption; key management for LTO-5, LTO-6, LTO-7, LTO-8, LTO-9, and LTO-10 based encryption.
Data Integrity Verification¹	Allows you to actively check data already written to tape. A PreScan process checks each imported tape and verifies that the new media is ready to accept data. QuickScan processes verify data integrity periodically or on demand.
Drive Lifecycle Management	Monitors and reports drive usage and performs verification tests to help prevent drive failures.
Integrated Partitioning	Shared Library Services (SLS) support multiple partitions within a single library. With SLS, a single Spectra library can appear as multiple libraries to the outside backup environment.
Library Lifecycle Management	Manages the health of library components using utilization metrics relative to the expected useful life of library robotics, filters, and other common library hardware.
Local & Remote Management	Manage locally via an intuitive, color touch-screen interface or remotely through a laptop or tablet for ease of use and simplified management.
Media Lifecycle Management¹	An integrated, proactive media management tool records and reports more than 40 metrics each time a tape is loaded, helping protect tapes and data.
Proactive Diagnostics & Monitoring	Library self-monitoring features alert you and SpectraGuard® Support via email, helping you proactively manage your library and minimize downtime.
REST Interface	Streamline or automate any library action to run on a recurring schedule or on demand, further reducing staff time needed to manage the library.
Security Scanning	Every LumOS Software release is verified with a Nessus security scan to ensure no known vulnerabilities are present before deployment.
Weather Station	Ensure stable library operation with monitoring of internal temperature and humidity, powered by strategically placed sensors and intelligent priority logic.

1. Requires using Spectra Certified Media.

About Spectra Logic Corporation

Spectra Logic modernizes IT infrastructures to preserve, protect and defend data, from days to decades, whether on-premises, in a single cloud, across multiple clouds or in all locations at once. Our cost-effective solutions help organizations efficiently manage, migrate and store long-term data, from terabytes to exabytes, with features that make it ransomware resilient.

© Spectra Logic. All trademarks and registered trademarks are properties of their respective owners.
Toll Free: 800-833-1132 • 303-449-6400 • 6285 Lookout Road • Boulder, CO 80301 USA



www.spectralogic.com