



# Encryption

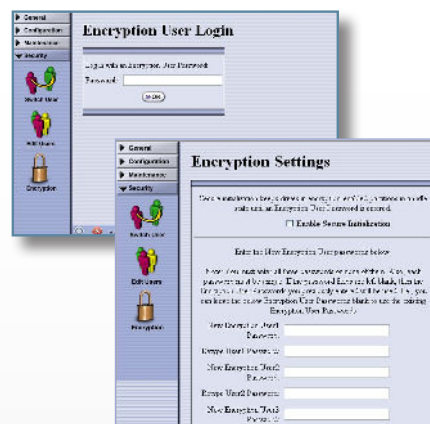
The necessity to provide encryption continues to escalate as regulations and laws mandate encryption to protect personal, financial and sensitive corporate data. To help every organization secure data on tape, Spectra® Encryption offers a range of solutions to meet your individualized encryption requirements. Spectra SKLM and BlueScale® Encryption deliver tailored, customer-centric encryption key management solutions through very flexible design options. Available with every Spectra Tape library, Spectra Encryption meets the needs of a broad variety of customers ranging from the very small business to the largest, most security conscious enterprise.



## Spectra BlueScale® Encryption

Spectra offers the only truly integrated encryption key management option for data on tape: BlueScale® Encryption Key Management. Spectra libraries with BlueScale Encryption Key Management are the only encryption solutions that completely integrate library administration with encryption key management. With secure BlueScale Encryption Key Management built into Spectra libraries, encrypting data on tape is easy to manage, efficient—and free. BlueScale Key Management is secure and easy to use, providing powerful key management features for encryption and decryption of your critical data.

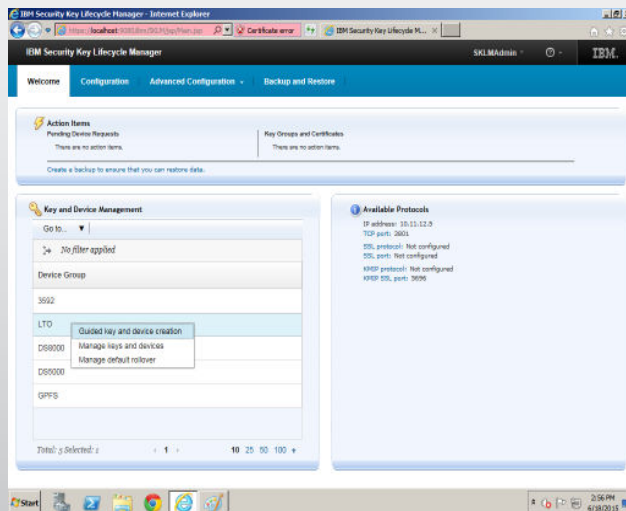
- Implements US federally approved, FIPS 140-2 compliant tape drives, using the AES-256 bit encryption algorithm
- Library integrated key management for encryption-capable tape drives
- Web-based Remote Library Controller (RLC) lets you manage data encryption safely from anywhere with secured Web connection
- Fits transparently into existing open systems environments with a vendor-agnostic, platform independent architecture and compatibility with major backup, archive and tiered storage applications
- Provides choice: available in a free Standard 1Key Edition or an optional Professional Edition that supports advanced features such as multiple keys and M-of-N key support
- Encryption keys can easily be backed up, archived and shared with other Spectra libraries
- Quorum based authentication (Professional Edition) allows users to construct hardened, defensible key control and sharing systems



## Spectra SKLM Encryption

For organizations with more complex and extensive requirements, Spectra SKLM Encryption Key Management is time tested and proven across enterprise level customers requiring the highest standard of encryption security. With Spectra SKLM you can deploy a clean, simple key management solution that meets the complex requirements your organization faces. Spectra SKLM is an encryption key manager that delivers a unified key management strategy to streamline your encryption deployment.

- Implements US federally approved, FIPS compliant tape drives and key manager, using AES-256 bit encryption
- Deploy a simple solution to a complex problem—encryption key management and security
- Centrally manage encryption keys across multiple libraries and data center locations
- Enable strong authentication and strong security
- Leverage flexible implementation options to meet your unique requirements
- Enable secure, third-party data exchange
- Simplify configuration and management tasks for keys and certificates of authority
- Facilitate security audits and track key lifecycle from creation to destruction
- Deliver a unified key management strategy to streamline your encryption implementation





# Encryption Comparison

Spectra offers two types of encryption to address diverse customer requirements. SKLM is a stand-alone, centralized key manager while BlueScale is integrated within, and specific to, each library. The following table shows the encryption features and functionality provided by BlueScale and Spectra SKLM encryption key management offerings, respectively.

Feature	BlueScale Encryption Key Management	Spectra SKLM Encryption Key Management
Library Integrated Server	X	
Stand-alone Server		X
Supports T50e, T120, T200, T380, T680, T950, TFinity	X	X
Supports Spectra Stack	X	X
Spectra & IBM Library Support (dual vendor shops)		X
Secure Initialization Mode	X	
Graphical User Interface	X	X
Command Line Interface		X
LTO-4 Drive Support	X	
LTO-5 and LTO-6 Drive Support	X	X
LTO-6 and LTO-7 Drive Support	X	X
LTO-8 Drive Support	X	X
LTO-9 Drive Support	X	X
TS1150 Technology Drive Support (TFinity, T950, T380 only)		X
TS1155 Technology Drive Support (TFinity, T950, T380 only)		X
TS1160 Technology Drive Support (TFinity)	X	X
TS1160 Technology Drive Support (T950 and T380)		X
Multi-library / Multi-site Support		X
AES-256 Bit Encryption	X	X
Key Max: (Standard: 1 Key) (Professional: 30 Key)	X	
Key Max: 1,000,000+		X
Key per Tape		X
M-of-N Key Shares	Available on T380, T680, T950, T950v, TFinity	
Symmetric Keys	X	X
Asymmetric Keys		X
Role-based Access Control	X	X
Key Grouping		X
Device Grouping		X
Key Group Policies		X
Key Rotation Policies		X
Key Lifecycle Status		X
Audit Verified Key Deletion		X
Certificates of Authority		X
Audit Trail		X
FIPS Certification	FIPS certified tape drives, key manager is not FIPS certified	FIPS certified tape drives and key management
KMIP Compliance		X
IKEv2-SCSI Compliance		X
Configuration, Policies, & Keystore Backup		X
LDAP Support		X